



Glen Ellyn School District 41: Ignite Passion. Inspire Excellence. Imagine Possibilities.

MINUTES

GLEN ELLYN SCHOOL DISTRICT 41

BOARD OF EDUCATION REGULAR MEETING

OCTOBER 14, 2014 - 7:30 PM

**CENTRAL SERVICES OFFICES
793 NORTH MAIN STREET
GLEN ELLYN, ILLINOIS**

Call to Order

Board President John Kenwood called the October 14, 2014 Board of Education Regular meeting to order at 7:30 p.m.

Pledge of Allegiance

Mr. Kenwood led in the recital of the Pledge of Allegiance.

Roll Call

Upon the roll being called, the following members answered present: Cathryn Wilkinson, Joe Bochenski, Erica Nelson, Patrick Escalante and John Kenwood. Absent: Dean Elger and Drew Ellis.

Public Participation

- Stephanie Clark reiterated her concerns about the majority of the Board's consensus to eliminate the second public participation opportunity during board meetings and asked the Board to consider reinstating its former practice of public participation at the beginning and end of each meeting.
- Jeff Cooper echoed Mrs. Clark's comments and suggested the decision was counter-productive and a disservice to the community. Mr. Cooper asked questions about the last time the District conducted a review for legal services; transportation costs related to snow plowing and a \$1,000 reimbursement to a staff member for professional development

Dr. Gordon noted the District's engagement with Franczek Radelet, was reviewed and discussed by the Board of Education in 2011. At that time, the Board determined it was satisfied with the fees schedule and professional services provided. Dr. Gordon also addressed a previous request made by Jennifer Rath and Jeff Cooper related to the amount of time teachers are out of the classroom for professional development and planning activities.

Presentations, Reports and Initiatives

- A. Frederick Quinn Corporation Construction Update: Jack Hayes of Frederick Quinn Corporation (FQC) provided the Board with a project status report on the four elementary additions. Mr. Hayes said that a full financial report and tracking will be provided to the Board at its next meeting. The Board asked clarifying questions around contingency plans that are in place and about the core space limitations that will remain after the construction is complete.

(Attachment)

- B. PTA Executive Council Report: Kristen Massey provided an update on PTA activities.
- C. Senate Bill 16 (SB16) Peg Agnos, Executive Director of the Legislative Education Network of DuPage (LEND) gave a PowerPoint presentation on [Senate Bill 16](#); a bill that could change the way education is funded in the State of Illinois. The bill, if passed, would reallocate state funds from districts that have higher property value to other school districts based on formula, and as written, would reduce the annual revenue that Glen Ellyn School District 41 receives from the State of Illinois by \$1.9 million in the fourth year of implementation of the law, a 79% reduction. Ms. Agnos noted that in a recent letter, Representative Linda Chapa LaVia indicated that the proposal will not become law in its current form and there is still work to be done.

Next Steps

- House Working Group is meeting.
- SB Working Group concepts and revisions driven by suburban districts.
- LEND Council Meeting October 24, 2014.
- Election November 4, 2014.
- Veto Session
 - November 19, 20 and 21.
 - December 2, 3, and 4.

More information and/or resources can be found on the LEND Website www.lend-dupage.org SB 16 Resources <http://www.lend-dupage.org/current-legislation/>

Discussion Items

- A. Final Bid Packet Recommendation for Forest Glen and Churchill Building Additions: On August 22, 2014, twenty (20) bid packages were returned to the district by various trade contractors for the proposed building additions at Forest Glen and Churchill Schools. The total value of the sixteen (16) trades is \$4,022,989. The remaining (4) four bid packets include acoustical ceilings, painting and coatings, operable partitions and window shades. Attached is a bid summary and FQC's recommendation.

The Board anticipates taking action on the matter at its October 27, 2014 meeting.

(Attachment)

- B. Transfer of Funds from the Education Fund to the Debt Service Fund: On July 1, 2008, the Board of Education elected to adopt a resolution re-establishing the Education, Operations & Maintenance and Transportation Funds as separate funds. This resolution allowed for the transfer of funds from the Education Fund to the Operations & Maintenance and Transportation Funds.

Illinois statute requires educational agencies to account for its operating leases in its Debt Service Fund. The attached resolution is approval to transfer funds from the Education Fund to the Debt Service Fund to pay for operating leases for security cameras, desktop computers, Smart Boards, computer switching equipment and wireless network update equipment. It is an inter-fund transfer that is required by law. The amount to be transferred from the Education Fund to the Debt Service Fund on November 10, 2014, will not exceed \$202,553.50.

The Board anticipates taking action on the matter at its October 27, 2014 meeting.

(Attachment)

- C. Supplemental Pay Recommendation: The Board discussed the following recommendations of the Supplemental Pay Committee:

- **English Language Learner (ELL) Club at Hadley:** Adding ELL Club as a Group II (100+hours) activity for the 2014-2015 school year.
- **Hadley Band 2014-2015** Adjusting the stipend for the Symphonic (eighth grade) Band from Group III to Group IV to reflect a reduced number of rehearsal hours for the 2014-2015 school year only and that two stipends be provided. The Committee will then review the stipends in the spring after the first year of implementation of the new schedule.
- **Hadley Orchestra 2014-2015:** Adjusting the Hadley schedule in order to move full orchestra rehearsals from before school to during the school day. .
- **Hadley Cheerleading** – Reducing the number of student contact hours for Cheerleading to fit the definition of a Group IV activity.

Below is a financial summary of the recommendations:

Activity	Number of Stipends	Supplemental Pay Group Rate	Total Cost
New ELL Club	1	Group II, step 1 (\$1,800)	\$1,800
Hadley Cadet Band (6 th 1 grade) - eliminate	1	Group III, step 3	(\$2,100)
Hadley Concert Band (7 th grade) - eliminate	1	Group III, step 3	(\$2,100)
Hadley Concert Band (7 th grade) - eliminate	1	Group III, step 4	(\$2,300)
Hadley Symphonic Band Old Stipend (8 th grade) – eliminate	1	Group III, step 4	(\$2,300)
Hadley Symphonic Band (8 th grade) – temporary one year stipend	1	Group IV, step 3	\$1,200
Hadley Symphonic Band (8 th grade) – temporary one year stipend	1	Group IV, step 4	\$1,600
Hadley Orchestra – temporary one year stipend	1	Group IV, step 1	\$700
Cheerleading - eliminate	1	Group II, step 4	(\$3,200)
Cheerleading - eliminate	1	Group II, step 2	(\$2,300)
Cheerleading – replace 1	1	Group IV, step 4	\$1,600
Cheerleading – replace 1	1	Group IV, step 2	\$1,000
TOTAL DIFFERENCE			(\$6,400)

The Board anticipates taking action on the matter at its October 27, 2014 meeting.

- D. Public Participation Protocols: President John Kenwood indicated he has received comments from community members regarding the Board's decision to discontinue his suggested protocol for public participation and move to a model that allows only one opportunity for public comment at the beginning of each Board meeting. Mr. Kenwood advised that in order to gain clarity around the matter, he revisited the audio recordings of the previous Board meetings where the matter was discussed, and contacted the Illinois Association of School Boards, about the book, "Coming to Order", a user's guideline for organizing and conducting Board meetings. Mr. Kenwood said he spoke with the IASB's Executive Director Roger Eddy about the agenda model in the book and IASB's rationale for recommending only one opportunity for public comment at the beginning of a board meeting. Mr. Kenwood said that it was IASB's intent to be compliant with the state statute and not to suggest that only one opportunity for public comment is considered "best practice". Mr.

Kenwood further indicated that IASB has no opinion on how many times public comment occurs during a board meeting and that it is a discretionary decision made by the school board.

Mr. Kenwood's said his preference would be to add a second opportunity for public participation at the end of the meeting, but at a minimum, public participation should occur after discussion items in order to give members of the public an opportunity to comment on matters being considered by the Board. Mr. Kenwood asked that the matter be placed on the next board meeting agenda for further discussion and consideration by the Board. Mrs. Nelson urged the Board to consider other forums for community engagement that would allow for deeper conversations. Mrs. Nelson asked that the matter be placed on the next board meeting agenda as well.

Action Items

- A. *Consent Agenda: Board members Wilkinson moved and Nelson seconded to approve the reports and recommendations contained in the consent agenda which included:*
 1. *Consent Agenda*
 - a. *Human Resources*
 1. *Personnel Report*
 2. *Employment recommendations*
 3. *Resignations*
 2. *Finance, Facilities & Operations*
 - a. *School District Payment Order (September 18 through October 2, 2014)*
 3. *Other Matters*
 - a. *Approval of Board Meeting Minutes*
 1. *September 22, 2014 Board of Education Regular Meeting*
 2. *September 22, 2014 Board of Education Regular Meeting-Closed Session*
 3. *October 6, 2014 Board of Education Special Meeting*

On a roll call vote answering "Aye": Bochenski, Escalante, Wilkinson and Kenwood; answering "Nay" None. Motion carried.

Superintendent's Recommendations

There were no recommendations requiring board action.

Superintendent's Report

Superintendent Dr. Paul Gordon reported on the following matters:

- Enrollment: Dr. Gordon reviewed the most recent enrollment report and noted that the departure of 14 families from the Parkside Apartments had a direct impact on the District's enrollment.
- The October 14 Institute Day was focused on staff planning; Dr. Gordon spent time at Hadley working with teachers and spent time at Churchill with the elementary teachers as well.
- There was a favorable article in the Chicago Tribune about the District's impressive math scores and a visit by a representative from the US Department of Education to talk about PBL and our ESL programs; both examples of our extraordinary staff and their hard work
- Gave kudos to the District's Chief Communication Officer Erika Krehbiel, who has done a great job working with our local reporters to make sure the District's story is told.

Board Reports

- Mrs. Nelson attended the Team 21 meeting which included a discussion on the book, "Disrupting Class", an update on PARCC testing, and a discussion about the coordination of their work with the District's Continuous Improvement Team (CIT).
- Mr. Escalante reported on the Finance Committee held earlier in the evening.
- Mrs. Wilkinson provided an update on Policy Committee and noted the next meeting is scheduled for October 31 and will include a discussion about the Committee's review timeline for the remainder of the year and an outline of the policies scheduled for review.

Upcoming Meetings

- October 23, 2014 Board of Education Special Meeting, 6 p.m., Central Services Office
- October 27, 2014 Board of Education Regular Meeting, 7:30 p.m., Central Services Office

Other Matters

Mrs. Nelson advised that Thursday is Glen Ellyn's State of the Village Address and noted a developer proposal is in the works for a five-story development on the Geishe property which is part of the downtown TIF. Mrs. Nelson suggested that Village Manager Mark Franz be contacted to find out how the plan might impact District 41

Adjourn to Closed Session

At 9:30 p.m. Board members Nelson moved and Wilkinson seconded to adjourn to closed session to discuss collective negotiating matters between the District and its employees or their representatives, or deliberations concerning salary schedules for one or more classes of employees On a roll call vote answering "Aye": Nelson, Bochenski, Wilkinson, Escalante and Kenwood; answering "Nay": None. Motion carried.

Return to Open Session


The Board returned to open session at 10:03 p.m.

Adjournment

There being no further business, Board members Escalante moved and Wilkinson seconded to adjourn the October 14, 2014 Board meeting. Motion carried on a unanimous voice vote.

Respectfully submitted,

Maureen Stecker, Board Recording Secretary



John Kenwood, Board President



Dean Eger, Board Secretary

Minutes approved: October 27, 2014



The What of Senate Bill 16 and The Why of Advocacy

Presented to Glen Ellyn School District 41

Board of Education

October 14, 2014

Peg Agnos, LEND Executive Director



SB 16 – Education Funding Reform

▶ **Primary State Aid Formula**

- ▶ Formerly General State Aid Formula, a single weighted formula combining GSA, most categorical grants and other funding programs administered by ISBE.
- ▶ Excludes high cost Special Education and Special Education transportation.
- ▶ **95% of state money** will flow through this new single formula.
- ▶ The weighted formula will be offset against a district's local resources.

SB 16 – Education Funding and Reform

Foundation Level

- SB 16 prioritizes resources where there is greater student need through a weighted formula.
 - Major Weightings
 - Special Ed = 1.0; 13.8% statewide average Special Ed population assigned.
 - Low-income = .25-.75 depending on concentration of poverty.
 - ELL = .20.
 - Regular Transportation = .06-.10 based on density/sq. mile.
 - AP and dual credit = .02
 - Gifted = .01
- Weighted Foundation Level = FL x Combined Student Weight.**
 - Example: the bill includes a weight of .20 for ELL, meaning an ELL student would generate an additional 20% of funding above the base foundation level.



SB 16 – Education Funding and Reform

- ▶ **Hold Harmless Provisions**

- ▶ "4 Year Phase-In Period"
 - ▶ Year 1 – A district will realize 25% of the gain or loss compared to the base year.
 - ▶ Year 2 – A district will realize 50% of the gain or loss compared to the base year.
 - ▶ Year 3 – A district will realize 75% of the gain or loss compared to the base year.

- ▶ **New Mandates**

- ▶ Requires districts to provide school based instead of district based accounting of expenditures. Requires additional resources for compliance and reporting.

- ▶ **Pensions**

- ▶ Normal pension costs for the Public School Teachers Pension and Retirement Fund of Chicago are excluded from the calculation of the primary state aid formula.



SB 16 – Education Funding and Reform

- **\$1000 Per Pupil Lost Cap**

- No district will lose more than \$1000 per pupil as compared to the base year. This provision is indefinite.
- The model for SB 16 is based upon data from the 2011 – 2012 school year and fiscal year 2013 distributions.

- **PTELL Adjustment**

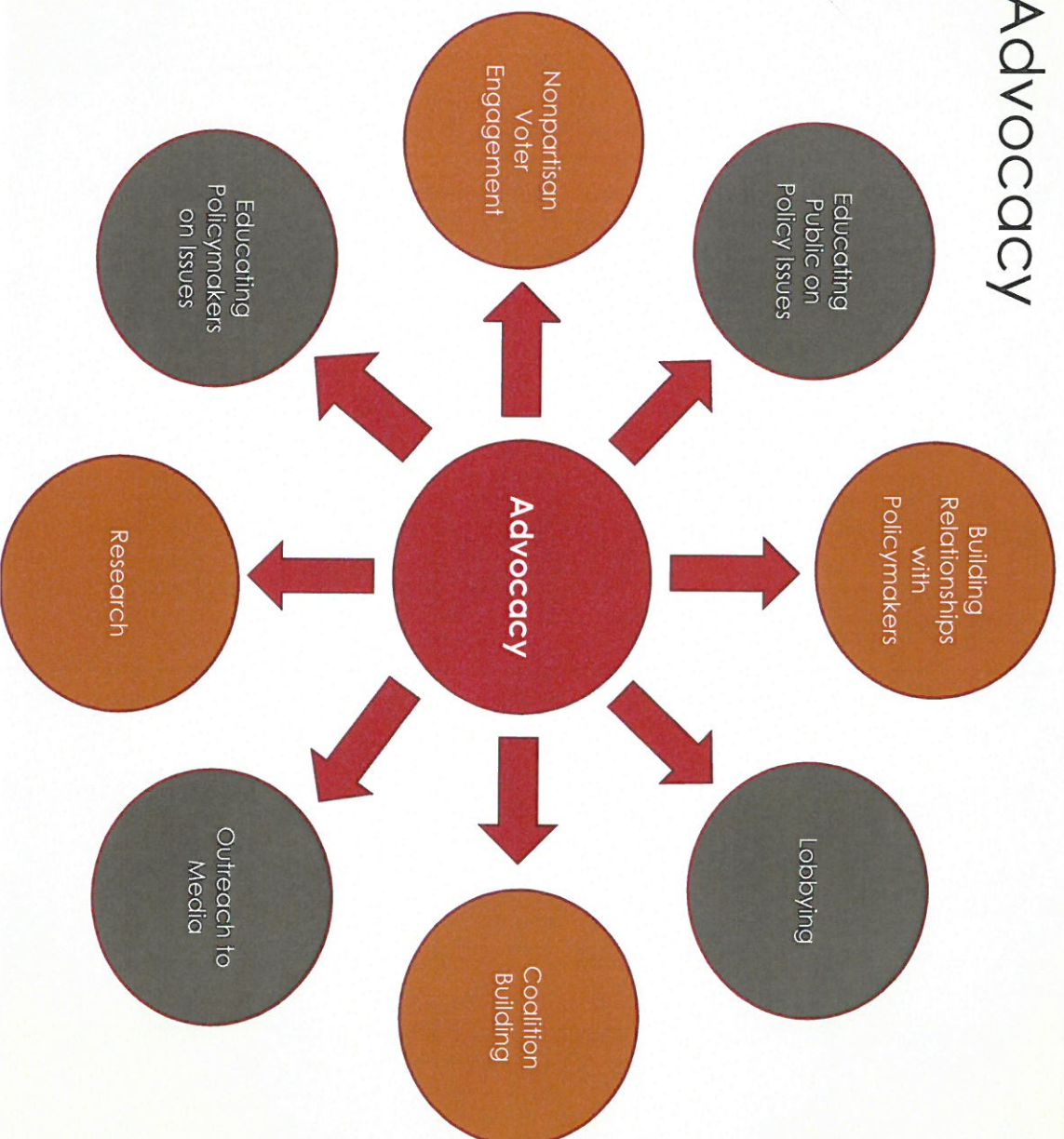
- Remains but is not included in the single formula and is paid through a separate appropriation. This signals a reduction in the priority for the PTELL adjustment and would allow the legislature to fund the line item at a reduced rate or not at all.



Current Developments

- ▶ House Work Group continues to meet. Representative Linda Chapa LaVida reassured me that she has no intention of calling the bill anytime soon and in a letter to several House members she stated “that the proposal in its current form will not become law and there is still much more work to be done”.
- ▶ SB 16 Work Group continues to meet.
- ▶ ISBE is looking at ways to make the bill more equitable.
- ▶ SB 1 the Sangamon County Judge will hear arguments in November that could speed resolution of the case in circuit court. What does this mean for our school districts?
- ▶ Mandates – SB 3662 (Bertino-Terrant) the sponsor held a meeting on September 30 and has asked us to review her bill. Mandates discussed: special education, physical education, drivers education, 3rd party vendors, English language learners, PARCC testing, and prevailing wage.

Common Advocacy Tactics





Benefits of Advocacy

- Advocacy is identifying, embracing and promoting a cause.
- Advocacy is an activity that can become second nature to most people.
- Advocacy furthers your mission and creates change by shaping public policy.
- Being an advocate means educating and taking action on legislative issues important to you.
- Advocacy is the opportunity to get off the sideline and participate in the decisions that will impact your community.



Basic Advocacy Tactics

- Engaging your legislators.
 - Invite legislators, staff and media to your facilities and events.
 - Send your newsletters to your policymakers.
 - Call and schedule a visit now at the local office while the General Assembly is in recess.
 - Be respectful and brief.
 - Remember to state who you represent and state your position on the issue.
 - Talk about how his or her community will be affected.
 - Keep your communication to one issue.
- Educating your community.
- Share your research information with other organizations, media.



Crafting an Advocacy Plan

- **What do we want?** What are the goals?
 - Slow down a public policy change.
- **Who can give it to us?**
 - State Senators
 - State Representatives
 - You can find your legislators at the following link: <http://www.leg-dupage.org/member-districts/legislative-contacts/#h8>
- **What do the policymakers need to hear?**
 - Impact of SB 16 on Glen Ellyn School District 41.
 - Normal pension costs for the Public School Teachers Pension and Retirement Fund of Chicago are excluded from the calculation of the primary state aid formula.
 - Imposes new reporting mandates on local school districts.
 - The weighting system for all Special Education students are the same (1.0) regardless of the services provided.



Crafting an Advocacy Plan

- ▶ **Who do the policymakers need to hear it from?**
 - ▶ The entire Glen Ellyn School community.
 - ▶ Every other impacted school district in the State of Illinois.
- ▶ **How do we begin?**
 - ▶ Tonight's meeting – understanding the issue – SB 16.
 - ▶ Take action –
 - ▶ Call - make an appointment at the legislators local office.
 - ▶ Write or email – be persistent but be polite, if you do not receive a response and contact them again.
 - ▶ Engage with the SB 16 Working Group.



Advocacy Tactics

State of Illinois
98th General Assembly
Senate Vote

NO. 13

Senate Bill No. 16
THIRD READING

May 27, 2014

32 YEAS	19 NAYS	6 PRESENT
N Althoff	NV Forby	P Lightford
N Barickman	Y Fredericks	Y Link
Y Bertino-Tarrant	Y Haine	P Luechtefeld
Y Biss	Y Harmon	Y Manar
N Bivins	Y Harris	Y Martinez
N Brady	Y Hastings	Y McCann
P Bush	Y Holmes	N McCarter
Y Clayborne	Y Hunter	Y McConaughay
Y Collins	Y Hutchinson	Y McGuire
N Connelly	Y Jacobs	Y Morrison
N Cullerton, T.	Y Jones, E.	N Mulroe
N Cunningham	Y Koehler	Y Muñoz
Y Delgado	Y Kotowski	N Murphy
N Dillard	N LaHood	Y Noland
N Duffy	Y Landek	N Oberweis
		P Radogno
		Y Raoul
		N Rezin
		N Righter
		Rose
		Y Sandoval
		N Silverstein
		Stadelman
		Steans
		Y Sullivan
		P Syverson
		Y Trotter
		Y Van Pelt
		Mr. President



Talking Points – Senate Bill 16 (SB 16)

- SB 16, currently in the House and sponsored by Representative Linda Chapa LaVía will radically change the way we fund schools in Illinois and negatively impact our school district. We would appreciate the opportunity to personally discuss this with you.
- SB 16 is modeled after an effort in Massachusetts. The MA General Assembly provided a process for infusion of new money when the new formula was implemented. There is **no new money in SB 16**. The legislation is a redistribution of current resources.
- The financial impact on our school district is significant. The district budget would be **reduced 1.9 million annually after the bill is fully implemented**.
- We support the phase in period, but recommend **longer than four years** to allow our district to plan a financial strategy to accommodate the program and staff changes that would be necessary as a result of these budget reductions.

Talking Points – Senate Bill 16 (SB 16)

- Should all special education students (1.0) have the same weighting regardless of the services provided?
 - i.e., A speech identified student would be weighted the same as a special education student in a self-contained classroom with a certified staff member and an assigned assistant.
- Illinois is a big state with significant differences, including the cost of housing and goods and services. We recommend a regional cost factor be included in the formula.
- The legislative leaders are beginning to talk about shifting the normal cost of pensions to local school districts, other than the Chicago Public Schools (CPS).
 - SB 16 losses and the imposition of the cost shift will be impossible for us to absorb.
 - SB 16 shifts the normal cost of the CPS pension to the State.
- There are **new mandates** in the bill requiring the district to provide school-based, rather than district-based, accounting of expenditures. This is an unfunded mandate and will require additional resources for compliance.



Next Steps

- House Working Group is meeting.
- SB Working Group concepts and revisions driven by suburban districts.
- LEND Council Meeting October 24, 2014.
- Election November 4, 2014.
- Veto Session
 - November 19, 20 and 21.
 - December 2, 3, and 4.



Resources

- ▶ LEND Website
 - ▶ www.lend-dupage.org
- ▶ SB 16 Resources
 - ▶ <http://www.lend-dupage.org/current-legislation/>



LEND Office

▶ Peg Agnos, Executive Director

▶ Office – 630-632-5074

▶ Cell – 630-632-2954

▶ pegagnos@lend-dupage.org

▶ Jen Figurelli, Program Coordinator

▶ Office – 630-632-5074

▶ Cell – 312-451-7278

▶ jenniferelli@lend-dupage.org

▶ LEND Office

▶ 22W600 Butterfield Rd

▶ Glen Ellyn, IL 60137



Glen Ellyn SD 41
Four Elementary School Additions
Project Status Report
10/8/2014

WORK RECAP

The following recaps the activities that occurred over the last 30 days at each location:

Franklin Elementary: Work over the last 30 days included the completion of concrete footings, foundation and interior slab on grade. Masonry bearing work is complete. Masonry veneer work is ongoing and as of this update 75% complete. Waterproofing work has been completed on the new foundation and retaining walls. Structural steel erection and detailing is complete. Carpentry work for roofing is ongoing. Above ground MEP rough in is ongoing including overhead roof drainage and electrical piping rough in.

Construction traffic continues to be routed to the temporary west access road and no incidents occurred and not complaints have been received. Street cleaning continues on a weekly basis at a minimum and more frequently if required by conditions.

Lincoln Elementary: During September work completed on the project included the completion of masonry bearing work and masonry veneer work on the courtyard elevation of both wings of the addition. Structural steel erection and detail work was completed during the last full week of September. Wood blocking work required for the installation of roofing is complete, and roofing installation is substantially complete. In conjunction with masonry and steel work rough in of plumbing, electrical and HVAC has occurred as required. Fire protection piping has been roughed in to the ceilings of the additions.

Forest Glen Elementary: Work included in the 1st phase of the project was completed during the last 30 days. All mass grading, site utilities and landscape restoration required to prepare the site for the new classroom addition is complete.

Churchill Elementary: Work at Churchill School included the completion of storm water work including connection of the new underground detention system. Mass grading work was completed as was re-spread of topsoil and the installation of a construction staging area to be used during the next phase of the project. The new asphalt play area was completed including the concrete sidewalk approaches. Fine grading for landscape restoration begun prior to the 10/14/2014 meeting as did the relocation of soft play structures.



Finally, processing and review of shop drawings, submittals, & RFI's is ongoing. Communication between the District, FGM and FQC is good and project level cooperation is going well. Owner / Arch / CM coordination meetings continue to occur formally on a weekly basis as do CM / Trade Contractor meetings.

WORK OUTLOOK

Work to be completed over the next 30 days at each location is projected as follows:

Franklin Elementary: Work at Franklin will include the installation of the roof on the addition areas, completion of masonry veneer and continuation of MEP rough in on the interior of the building. Additionally site concrete work, site grading and the first phase of asphalt paving are scheduled to be completed. Exterior work items area weather dependent and care will be taken to utilize every available opportunity to complete these work items. We will work additional premium hours to complete critical path work items in order to make up lost schedule days.

Lincoln Elementary: Work at Lincoln is focused on MEP rough in, masonry veneer and interior architectural rough in. The completion of site storm water piping and detention is critical work which is scheduled to be completed this month to allow for final site grading and paving work. Exterior work items area weather dependent and care will be taken to utilize every available opportunity to complete these work items. As necessary we will work premium time to maintain the schedule completion date to allow for start of school in January.

Forest Glen Elementary: Weather permitting excavation for and installation of footings and foundations will be completed followed by the installation of underground plumbing.

Churchill Elementary: Relocation of playground equipment will be completed. Re-alignment of site fencing will be completed. After students begin using the new asphalt play area site demolition and mass grading required for the new addition will begin.

FQC onsite personnel and office personnel will continue management of ongoing work onsite and coordination of future work items.

CONTRACTING/BIDDING

SD 41 BOE will review the final four trade contract awards at the October board meetings. Assuming approval of those trade contracts the bidding and award process for this phase of the project will be substantially complete. The cumulative value of trade contracts has been consistent with the project budgets.

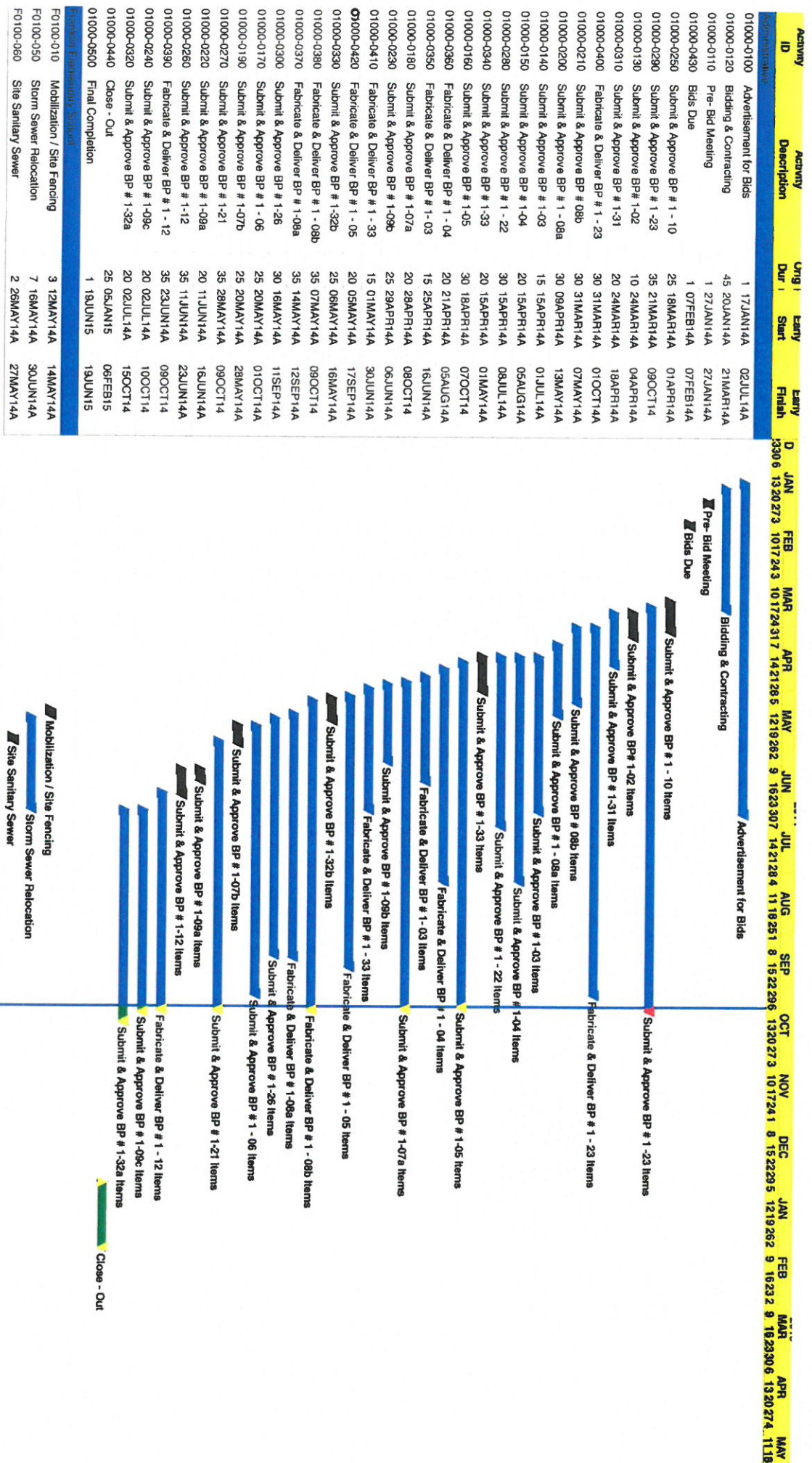


PROJECT SCHEDULE/BUDGET

An updated project schedule is attached. Work at Forest Glen School reflects the substantial completion date of 9/26/2014 for phase 1 work. Work at Franklin School reflects the impact of delays associated with the storm sewer / water main relocation. Both Franklin and Lincoln continue to be impacted due to days lost to weather. Both project schedules have been updated to reflect progress to date and to expand the work week from 5 days to 6. The increased work days along with re-sequencing of slab on grade work and compression of work durations is maintaining substantial completion dates prior to the winter break of this year. This is critical to allow staff to have the appropriate time move in and set up time to allow for student occupancy in January.

Meeting or exceeding the schedule dates attached will require the selective use of premium time work at one or both of the project sites. FQC will monitor this situation and attempt to minimize the cost impact of premium time while still maintain the project completion dates. Costs for premium time were anticipate in the project budget.

Overall costs for the project remain within budget and the budget continues to contain contingency funds for unforeseen conditions.



Activity	Activity Description	Orig Dur	Early Start	Early Finish	D	JAN	FEB	MAR	APR	MAY	JUN	JUL	AUG	SEP	OCT	NOV	DEC	JAN	FEB	MAR	APR	MAY	
F0100-070	Excavation for Structures	8	05JUN14A	29AUG14A	13306	1320	273	1017	243	1017	243	17	1421	285	1219	262	9	1623	307	1421	284	11	1825
F0100-730	Electrical Rough IN - Building	5	13JUN14A	04JUL14A																			
F0100-020	Temporary Partitions / Corridors	4	18JUN14A	23JUN14A																			
F0100-030	MEP Disconnect & Make - Safe	2	18JUN14A	19JUN14A																			
F0100-520	Fire Protection Express Main	3	18JUN14A	25JUL14A																			
F0100-150	Selective Demolition	5	20JUN14A	02JUL14A																			
F0100-040	West Access Rd.	5	02JUL14A	15AUG14A																			
F0100-090	CIP Concrete Foundations /	10	03JUL14A	20SEP14A																			
F0100-750	RFI # R10 - Storm Sewer /	1	14JUL14A	22AUG14A																			
F0100-240	Masonry Bearing - East Wall	7	30JUL14A	04AUG14A																			
F0100-220	Masonry Bearing & Veneer North	5	04AUG14A	16SEP14A																			
F0100-660	Electrical Rough IN - Conduit	26	11AUG14A	27OCT14																			
F0100-100	Foundation Waterproofing	4	11AUG14A	26AUG14A																			
F0100-110	Foundation Drainage	2	11AUG14A	15AUG14A																			
F0100-120	Foundation Backfill	2	15AUG14A	08OCT14																			
F0100-300	Masonry Bearing & Veneer West	8	18AUG14A	22SEP14A																			
F0100-210	Masonry Bearing - North Wall of	5	18AUG14A	22AUG14A																			
F0100-200	Masonry Bearing South Wall of	5	19AUG14A	25AUG14A																			
F0100-260	Masonry Bearing & Veneer Rms	8	27AUG14A	03OCT14A																			
F0100-080	Interior Underground Plumbing	4	03SEP14A	08SEP14A																			
F0100-140	CIP Concrete - Slab on Grade	3	29SEP14A	30SEP14A																			
F0100-640	Asphalt Paving - Phase I	4	16OCT14	20OCT14																			
F0100-380	Hollow Metal Door / Borrowed	4	08OCT14	11OCT14																			
F0100-230	Masonry Bearing - North Wall of	3	17SEP14A	19SEP14A																			
F0100-180	Site Concrete - North Courtyard	3	09OCT14	11OCT14																			
F0100-250	Masonry Bearing - South Wall -	3	22SEP14A	24SEP14A																			
F0100-270	Structural Steel Floor / Roof	4	01OCT14A	08OCT14A																			
F0100-190	Site Concrete - South Courtyard	4	09OCT14	13OCT14																			
F0100-280	Floor / & Roof Decking	3	01OCT14A	08OCT14A																			
F0100-130	CIP Concrete - Courtyard Stairs	1	14OCT14	14OCT14																			
F0100-170	CIP Concrete - Slab on Metal	1	09OCT14	09OCT14																			
F0100-460	Plumbing Rough IN - Roof	5	09OCT14	14OCT14																			
F0100-290	Roof Curbs & Roof Blocking	4	07OCT14A	10OCT14																			
F0100-160	CIP Concrete - Interior Stairs	3	09OCT14	11OCT14																			
F0100-590	Misc. Metal Stair Railings	5	15OCT14	20OCT14																			
F0100-320	Modified Roofing System	7	13OCT14	20OCT14																			
F0100-670	Electrical Rough IN - Wiring	15	28OCT14	13NOV14																			
F0100-390	HVAC Sheet Metal Rough IN -	3	21OCT14	23OCT14																			
F0100-360	Aluminum Curtain Wall - South	5	21OCT14	25OCT14																			
F0100-340	Aluminum Curtain Wall - North	4	21OCT14	24OCT14																			
F0100-310	Pre-Fabricated Skylights	3	21OCT14	23OCT14																			

Project Start: 28OCT13
 Project Finish: 18JUN15
 Date Date: 09OCT14
 Run Date: 09OCT14

LMC
 Early Bar
 Progress Bar
 Critical Activity

Glen Ellyn S.D. # 41
 Lincoln - Franklin - Forest Glen
 Project Schedule Updated 10/8/2014

Sheet 2 of 5

Activity ID	Activity Description	Unit	Start	Early Finish	D	JAN	FEB	MAR	APR	MAY	JUN	JUL	AUG	SEP	OCT	NOV	DEC	JAN	FEB	MAR	APR	MAY
F0100-350	Aluminum Storefront - West	2	21OCT14	22OCT14	1330 6	1320 273	1017 243	1017 243 7	1421 285	1219 262	9 1623 307	1421 284	11 18 251	8 16 22 296	1320 273	1017 241	9 15 22 285	1219 262	9 1623 2	9 1623 306	1320 274	11 18
F0100-410	HVAC Sheet Metal Rough IN -	2	21OCT14	22OCT14																		
F0100-330	Roof Related Sheet Metal	8	21OCT14	29OCT14																		
F0100-400	HVAC Sheet Metal Rough IN	10	24OCT14	04NOV14																		
F0100-470	Plumbing Rough IN - Waste,	5	29OCT14	03NOV14																		
F0100-500	Gypsum Board Soffits / Ceilings	7	30OCT14	06NOV14																		
F0100-720	Electrical Trim - Power for	4	14NOV14	18NOV14																		
F0100-530	Fire Protection Rough IN	8	05NOV14	13NOV14																		
F0100-430	HVAC Rough IN - TC	8	05NOV14	13NOV14																		
F0100-620	Interior Painting	10	07NOV14	18NOV14																		
F0100-680	Electrical Trim - Lighting	8	14NOV14	22NOV14																		
F0100-440	HVAC Trim - TC	5	19NOV14	24NOV14																		
F0100-550	Acoustical Ceiling Grid	7	19NOV14	26NOV14																		
F0100-510	Classroom Casework	6	19NOV14	25NOV14																		
F0100-690	Electrical Trim - Power	6	19NOV14	25NOV14																		
F0100-580	Misc. Interior Glazing	3	19NOV14	21NOV14																		
F0100-420	HVAC Sheet Metal Trim	6	21NOV14	27NOV14																		
F0100-480	Plumbing Fixture Trim	5	26NOV14	01DEC14																		
F0100-540	Fire Protection Trim	5	27NOV14	02DEC14																		
F0100-830	Corridor Storage Cupboards	5	27NOV14	02DEC14																		
F0100-710	Electrical Trim - Low Voltage	6	27NOV14	03DEC14																		
F0100-700	Electrical Trim - FA	4	27NOV14	01DEC14																		
60100-490	Resilient Flooring & Accessories	8	03DEC14	11DEC14																		
F0100-560	Acoustical Ceiling Tile	10	03DEC14	13DEC14																		
F0100-370	Aluminum Entrances Rm C301,	3	03DEC14	05DEC14																		
F0100-570	Interior Doors & Finish Hardware	5	12DEC14	17DEC14																		
F0100-600	Operable Partitions	4	12DEC14	16DEC14																		
F0100-610	Visual Display Boards	2	12DEC14	13DEC14																		
F0100-450	HVAC Test & Balance	3	15DEC14	17DEC14																		
01000-0480	Substantial Completion	1	18DEC14	18DEC14																		
01000-0490	Punchlist	9	19DEC14	31DEC14																		
F0100-740	Asphalt Paving - Phase II	5	03JUN15	09JUN15																		
F0100-650	Landscape Restoration	7	10JUN15	18JUN15																		
Leeson Elementary School																						
L0100-010	Mobilization / Site Fencing	2	06JUN14A	09JUN14A																		
L0100-400	Disconnect / Relocate Mobil	10	06JUN14A	19JUN14A																		
L0100-050	MEP Disconnect & Make - Safe	2	10JUN14A	11JUN14A																		
L0100-030	Selective Demolition	5	19JUN14A	02JUL14A																		
L0100-040	Temporary Partitions / Corridors	10	02JUL14A	04AUG14A																		
L0100-280	Fire Protection Express Mains	5	02JUL14A	08JUL14A																		
L0100-450	HVAC Rough IN - HWS / HWR	8	02JUL14A	04AUG14A																		

Project Start
Project Finish
Plan Date
Run Date

20DEC13
10AUN15
08OCT14
08OCT14

Early Bar
Progress Bar
Critical Activity

100%

Glen Ellyn S.D. # 41
Lincoln - Franklin - Forest Glen
Project Schedule Updated 10/8/2014

Activity ID	Activity Description	Orig Dur	Early Start	Early Finish	D	JAN	FEB	MAR	APR	MAY	JUN	JUL	AUG	SEP	OCT	NOV	DEC	JAN	FEB	MAR	APR	MAY	
L0100-560	Electrical Rough IN - Conduits -	5	02JUL14A	31JUL14A	1330	6	1320	273	1017	243	1017	243	1017	243	1017	243	1017	243	1017	243	1017	243	1017
L0100-020	Site Demolition	4	10JUL14A	14JUL14A																			
L0100-430	HVAC Rough IN - Piping -	7	14JUL14A	04AUG14A																			
L0100-520	Masonry Infills	4	14JUL14A	20AUG14A																			
L0100-080	Excavation for Structures	3	15JUL14A	17JUL14A																			
L0100-090	CIP Concrete Footings /	6	18JUL14A	04AUG14A																			
L0100-530	Rm 104 Casework Modifications	2	04AUG14A	02SEP14A																			
L0100-540	Rm 105 Casework Modifications	2	04AUG14A	02SEP14A																			
L0100-570	Electrical Rough IN - Wire -	2	05AUG14A	08OCT14																			
L0100-100	Masonry Bearing Walls	18	12AUG14A	26SEP14A																			
L0100-480	Hollow Metal Door & Borrowed	6	12AUG14A	13OCT14																			
L0100-440	HVAC Trim - Unit Ventilators	3	15AUG14A	18AUG14A																			
L0100-700	Electrical Rough IN - Conduit	15	18AUG14A	22OCT14																			
L0100-180	Aluminum Windows - Rm 103	1	20AUG14A	22AUG14A																			
L0100-180	Aluminum Windows - Rm 106	1	20AUG14A	22AUG14A																			
L0100-670	Fall 2014 Start of School	1	20AUG14A	20AUG14A																			
L0100-220	Underground Plumbing	8	29AUG14A	15SEP14A																			
L0100-060	Storm Sewer Modifications /	5	08OCT14	13OCT14																			
L0100-070	Site Sanitary Sewer Piping	3	14OCT14	16OCT14																			
L0100-730	CIP Concrete - Slab on Grade	3	26SEP14A	29SEP14A																			
L0100-460	Structural Steel Framing	7	22SEP14A	26SEP14A																			
L0100-680	Masonry Veneer	10	15SEP14A	11OCT14																			
L0100-230	Plumbing Rough - Waste, Water	6	08OCT14	14OCT14																			
L0100-470	Roof Decking	3	24SEP14A	26SEP14A																			
L0100-630	Roof Blocking	3	27SEP14A	06OCT14A																			
L0100-240	Plumbing Rough - Roof Drainage	4	01OCT14A	11OCT14																			
L0100-330	Building Addition Roofing	5	07OCT14A	10OCT14																			
L0100-710	Electrical Rough IN - Wire	5	23OCT14	28OCT14																			
L0100-210	HVAC Sheet Metal Rough IN	10	13OCT14	23OCT14																			
L0100-130	Aluminum Curtain Wall - North	3	13OCT14	15OCT14																			
L0100-110	Aluminum Curtain Wall - North	1	13OCT14	13OCT14																			
L0100-120	Storm Water Detention System	5	14OCT14	18OCT14																			
L0100-380	HVAC Rough IN - RTU's	2	11OCT14	13OCT14																			
L0100-420	HVAC Rough IN - EF's	5	14OCT14	18OCT14																			
L0100-340	Building Addition Roof Screening	5	14OCT14	18OCT14																			
L0100-140	Aluminum Curtain Wall South	4	16OCT14	20OCT14																			
L0100-740	Site Concrete	4	20OCT14	23OCT14																			
L0100-150	Aluminum Curtain Wall - South	4	21OCT14	24OCT14																			
L0100-640	Landscape Restoration	5	24OCT14	29OCT14																			
L0100-290	Fire Protection Rough IN	7	29SEP14A	25OCT14																			
L0100-690	HVAC Piping Rough IN - Addition	8	24OCT14	01NOV14																			

Project Start

Project Finish

Date Date

Run Date

26OCT13

18AUG15

08OCT14

08OCT14

Early Bar

Program Bar

Critical Activity

UNC

Sheet 4 of 5

Glen Ellyn S.D. # 41

Lincoln - Franklin - Forest Glen

Project Schedule Updated 10/9/2014

FCQC

TM

Activity ID	Activity Description	Unit Dur	Early Start	Early Finish	D	JAN	FEB	MAR	APR	MAY	JUN	JUL	AUG	SEP	OCT	NOV	DEC	JAN	FEB	MAR	APR	MAY		
LO100-410	HVAC Rough IN - TC	7	24OCT14	31OCT14	1330	6	1320	27	3	1017	24	3	1421	28	5	1522	29	6	1623	30	6	1320	27	4
LO100-320	Interior Painting	12	27OCT14	08NOV14																				
LO100-300	Fire Protection Trim	5	27OCT14	31OCT14																				
LO100-260	Acoustical Ceiling Grid	6	10NOV14	15NOV14																				
LO100-350	Roof Related Sheet Metal	6	10NOV14	15NOV14																				
LO100-550	Electrical Trim - Power	5	10NOV14	14NOV14																				
LO100-620	Electrical Trim - Low Voltage	5	10NOV14	14NOV14																				
LO100-600	Electrical Trim - FA	4	10NOV14	13NOV14																				
LO100-200	Misc. Interior Glazing	2	10NOV14	11NOV14																				
LO100-580	Electrical Trim - Lighting	5	17NOV14	21NOV14																				
LO100-500	HVAC Sheet Metal Trim	4	17NOV14	20NOV14																				
LO100-610	Electrical Trim - RTU's	2	21NOV14	22NOV14																				
LO100-270	Acoustical Ceiling Tile	7	22NOV14	29NOV14																				
LO100-550	HVAC Test & Balance	3	24NOV14	28NOV14																				
LO100-360	Classroom Casework	4	01DEC14	04DEC14																				
LO100-370	Hallway Cubbies	4	01DEC14	04DEC14																				
LO100-380	Operable Partitions	4	01DEC14	04DEC14																				
LO100-310	Resilient Flooring & Accessories	5	05DEC14	10DEC14																				
LO100-160	Aluminum Entrance C201	2	05DEC14	08DEC14																				
LO100-170	Aluminum Entrance C203	2	05DEC14	08DEC14																				
LO100-250	Plumbing Trim	2	05DEC14	08DEC14																				
LO100-490	Hollow Metal, Wood Doors &	7	11DEC14	18DEC14																				
LO100-510	Visual Display Boards	2	11DEC14	12DEC14																				
LO100-660	Substantial Completion	1	19DEC14	19DEC14																				
LO100-650	Punchlist	10	22DEC14	02JAN15																				
Forest Glen Elementary School																								
FG0100-010	Mobilization / Site Fencing	2	13JUN14A	16JUN14A																				
FG0100-020	Disconnect / Relocate Mobil	10	16JUN14A	23JUN14A																				
FG0100-060	Site Demolition / Silt Fencing	2	23JUN14A																					
FG0100-050	Underground Storm Water	12	14JUL14A	31JUL14A																				
FG0100-070	Mass Grading / Building Pad	10	21JUL14A	15SEP14A																				
FG0100-030	Sanitary Sewer Relocation	4	05AUG14A	18AUG14A																				
FG0100-040	Storm Sewer Relocation	4	11AUG14A	19AUG14A																				
FG0100-080	Landscape Restoration	5	16SEP14A	19SEP14A																				
FG0100-090	Substantial Completion	1	26SEP14A	26SEP14A																				
FG0100-100	Punchlist	8	08OCT14	16OCT14																				

Project Start
Project Finish
Date Date
Run Date

2012/13
18AUG15
09OCT14
08OCT14

Early Bar
Program Bar
Critical Activity

LNC

Glen Ellyn S.D. # 41
Lincoln - Franklin - Forest Glen
Project Schedule Updated 10/8/2014

Sheet 5 of 5



Glen Ellyn School District 41: Ignite Passion. Inspire Excellence. Imagine

Board Report

Date: October 14, 2014

Title: Final Bid Packet Recommendation for Forest Glen and Churchill Building Additions

Submitted by: Bob Ciserella – Assistant Superintendent – Finance, Facilities & Operations

Long-Range Plan Focus:

This recommendation provides for alignment with Goal #6 of the Superintendent's Long-Range Plan:

The District will utilize its resources responsibly and provide facilities that align with a 21st century organization.

Discussion:

On August 22, 2014, twenty (20) bid packages were returned to the district by various trade contractors for the proposed building additions at Forest Glen and Churchill Schools. The total value of the sixteen (16) trades \$4,022,989 or approximately \$136,000 under budget. The remaining (4) four bid packets include acoustical ceilings, painting and coatings, operable partitions and window shades.

The attached bid summary and recommendation provided by FQC, district construction manager, concludes all the bidding associated with the additions for Forest Glen and Churchill Schools.

Additional Costs and Information:

None at this time.

Recommendation:

This information is presented for discussion. The administration will recommend at the Board of Education October 27, 2014, meeting that the board approve the recommendation to accept the bid recommendation provided by FQC in the amount of \$240,219.00 for the Forest Glen and Churchill School additions.

We make a difference. We embrace change together. We are a true team of professionals. We build the future.

Superintendent Dr. Paul Gordon

Glen Ellyn School District 41

793 N. Main St., Glen Ellyn, IL 60137

Phone 630.790.6400 Fax 630.790.1867 www.d41.org

September 12, 2014

Mr. Bob Ciserella
Assistant Superintendent
Glen Ellyn School District #41
793 North Main Street
Glen Ellyn, IL 60137

RE: Churchill & Forest Glen Elementary Schools
BP #2 / Remaining Award Recommendations
FQC #480 & 482

Dear Mr. Ciserella:

The following are the four (4) remaining trade award recommendations from BP#2 for the building construction at Churchill & Forest Glen Elementary Schools. This completes the recommendations for all twenty bid packages. We have met with the contractors and completed the scope review meetings for the following recommendations. Attached to this correspondence are copies of bid tallies from the bid opening.

1. **Bid Package #2-09a Acoustical Ceilings** – One (1) bid was received. The as read low bidder is Just Rite Acoustics, of Elk Grove Village, IL. There are no irregularities with the bid presented and includes the complete scope of work required by the contract documents, and are consistent in pricing with the previous schools bid. We recommend that BP #2-09a be awarded to Just Rite Acoustics for a total awarded amount of One Hundred Ten Thousand Sixty One Dollars (\$110,061.00).
2. **Bid Package #2-09c Painting & Coatings** – Four (4) bids were received. The as read low bidder is Cosgrove Construction Inc., Joliet, IL. They did not acknowledge addendum #3 or include the required unit prices with their bid. During the scope review they accepted addendum #3 and provided the required unit prices with no other irregularities. We recommend that these minor irregularities be waived by the School District Board of Education, and this bid be deemed responsive. We recommend that BP #2-09c be awarded to Cosgrove Construction for a total awarded amount of Forty Two Thousand Nine Hundred Sixty Dollars (\$42,960.00).
3. **Bid Package #2-10 Operable Partitions** - Two (2) bids were received. The as read low bidder is Hufcor-Chicago, Addison, IL. They provided a complete bid per the required scope of work with no irregularities. We recommend that BP#2-10 be awarded to Hufcor for the awarded amount of Fifty Two Thousand One Hundred Ninety Eight Dollars (\$52,198.00).
4. **Bid Package #2-12b Roller Window Shades** - Two (2) bids were received. The as read low bidder is Shadeology, LLC, Mahomet, IL. There are no irregularities with the bid presented and includes the complete scope of work required by the contract documents. We recommend that BP #2-12b be awarded to Shadeology for a total awarded amount of Thirty Five Thousand Dollars (\$35,000.00).

The value of the award recommendation as detailed above is under budget, resulting in a savings as noted previously in our letter of 9.3.14.

Mr. Bob Ciserella
Glen Ellyn School District #41
September 12, 2014
Page 2

Please review, sign and return one copy of this correspondence indicating your acceptance of these recommendations. Upon receipt of this approval, Frederick Quinn Corporation will prepare the appropriate contract documents for the trade contractors recommended above.

Sincerely,

FREDERICK QUINN CORPORATION



Frederick J. Marano
Executive Vice President of Estimating

Enclosures

CC: Dr. Paul Gordon, Superintendent
Linda Lane / FGM
Jack Hayes / FQC
John Eallonardo / FQC
Adam Slotkus / FQC
File / FQC

Acceptance of Recommendations





Frederick Quinn Corporation
Bid Tally

Trade: BP #2-09c - Paintings & Coatings
Project: Glen Eilyn School District - Churchill & Forest Glen Elementary Schools
FQC #460 & #482
8.22.14

[illegible]

BP #2-09c



Frederick Quinn Corporation
Bld Tally

Trade: BP #2-10 - Operable Partitions
Project: Glen Elyn School District - Churchill & Forest Glen Elementary Schools
FQC #480 & #482
8.22.14

[illegible]

BP #2-10

Frederick Quinn Corporation
Bld Tally

Trade: BP #2-12b - Roller Window Shades
Project: Glen Eilyn School District - Churchill & Forest Glen Elementary Schools
FQC #460 & #462
6.22.14

[illegible]

**RESOLUTION TRANSFERRING MONEY
FROM THE EDUCATION FUND TO THE DEBT SERVICE FUND**

WHEREAS, Part 100 of the Illinois Administrative Code, including without limitation 23 Ill. Adm. Code 100.50, and the Illinois Program Accounting Manual (the "IPAM"), requires Illinois school districts to document the funding of, accounting for, and expenditures from the Debt Service Fund; and

WHEREAS, the Board of Education desires to remain in compliance with generally accepted accounting principles and the requirements set forth in the IPAM; and

WHEREAS, the Board of Education previously authorized and directed the School Treasurer to establish a Debt Service Fund in order to remain in compliance with generally accepted accounting principles and those requirements set forth in the IPAM; and

WHEREAS, the Board of Education has determined that it is in the best interest of the School District to direct the School Treasurer to transfer certain funds dedicated to capitalized lease payments from the Education Fund to the Debt Service Fund in order to provide moneys with which to meet those expenses, which are properly made from the Debt Service Fund pursuant to IPAM;

NOW, THEREFORE, BE IT RESOLVED by the Board of Education of Glen Ellyn School District No. 41, DuPage, Illinois, as follows:

Section 1. The Board of Education hereby finds that all of the recitals contained in the preambles to this Resolution are full, true and correct and does hereby incorporate them into this Resolution by reference.

Section 2. The School Treasurer of the School District is hereby directed to transfer \$202,553.50 from the Education Fund to the Debt Service Fund, such transfer to be made effective October 27, 2014.

Section 3. This Resolution shall be in force and effect upon its adoption.

AYES: _____

NAYS: _____

ABSENT: _____

Dated this 27th day of October, 2014.

President, Board of Education

ATTEST:

Secretary, Board of Education

Glen Ellyn School District #41 Board Report

Date: October 14, 2014

Title: Personnel Report – Final

Contact: Laurie Campbell, Assistant Superintendent for Human Resources

Long-Range Plan Focus: The recommendations contained in this Personnel Report support Goal #2, Development of Human Capital, of the Superintendent's Long-Range Plan.

Employment Recommendations:

Name	School	Position	Placement/Salary	Effective Date
Beaman, Heather	Hadley	Club Sponsor, Animal Helpers Club	Group V, step 4/\$800	2014-2015 school year
Fruit, Lee	Lincoln	Special Ed Aide (.50 FTE)	\$12.63/\$6,867.53	October 15, 2014
Gust, Carolyn	CSO	Transportation Coordinator (Stipend)	\$3,000.00	2014-2015 school year
Kloet, Sheila	Forest Glen	Lunchroom/Playground Supervisor	\$20.00 per hour	September 29, 2014
Laird, Kim	Forest Glen	School Secretary	\$12.02/ \$13,071.69	October 15, 2014
Lott, Shannon	Hadley	Special Ed Aide	\$12.63/\$13,829.71	October 14, 2014
Stelter, Rose	Lincoln	Lunchroom/Playground Supervisor Substitute	\$20.00 per hour	October 15, 2014

Resignation:

Name	School	Position	Effective Date
Cairns, Kathleen	Lincoln	Special Ed Aide	September 25, 2014
Geils, Natalie	Forest Glen	Food Server(2 Hours Per Day)	October 15, 2014
Sieck, Kyle	Hadley	Boys Basketball Head Coach	October 06, 2014
Wawak, Kate	Churchill	Special Ed Aide	October 03, 2014

Recommendation: It is recommended that the Board accept the actions included in this Personnel Report as presented.



Glen Ellyn School District 41: Ignite Passion. Inspire Excellence. Imagine Possibilities.

School District Payment Order

The Treasurer, Robert J. Ciserella, of Glen Ellyn School District 41 in DuPage County, shall pay to the order of the attached list of vendors the sum of \$946,070.22 for September accounts payable and payroll liability checks and the sum of \$198,795.65 for October interim accounts payable.

This order authorizes the Treasurer to pay board-approved bills before the meeting minutes are officially approved.

By order of the School Board of Glen Ellyn District 41.

Order Date: October 14, 2014

President

Secretary

10/20/14

We make a difference. We embrace change together. We are a true team of professionals. We build the future.

Superintendent Dr. Paul Gordon

Glen Ellyn School District 41

793 N. Main St., Glen Ellyn, IL 60137

Phone 630.790.6400 Fax 630.790.1867 www.d41.org

CHECK		CHECK		INVOICE	
DATE	NUMBER	VENDOR	AMOUNT	DESCRIPTION	
09/18/2014	16932	LUKANCIC MIDDLE SCHO	-250.00	entry fee for Feb. 7 & 8 wrestling tournament	
09/29/2014	18743	A RELIABLE PRINTING	414.00	Multiple Invoices	
09/29/2014	18744	A-1 AIR COMPRESSOR C	154.00	COMPRESSOR SERV	
09/29/2014	18745	ACADEMIC COMMUNICATI	108.35	Supplies for Camille Ponce - Speech/Language Pathologist at Churchill	
09/29/2014	18746	ACT ON BULLYING	2,000.00	Multiple Invoices	
09/29/2014	18747	AMERICAN TAXI DISPAT	2,130.00	TRANSPORTATION 8/1-8/29/14	
09/29/2014	18748	ARMBRUST PLUMBING IN	833.26	FG SERV CALL	
09/29/2014	18749	AT&T	43.40	630- 299-0236 9/16-10/15	
09/29/2014	18750	BENJAMIN FRANKLIN SC	257.00	Multiple Invoices	
09/29/2014	18751	BLICK, DICK	126.63	General Art Supplies	
09/29/2014	18752	BOOKSTORE LTD, THE	108.66	Walter Was Worried Books Invoice#2715	
09/29/2014	18753	BOUND TO STAY BOUND	1,050.55	Multiple Invoices	
09/29/2014	18754	BRENNAN, KATHLEEN	220.67	Classroom Supplies	
09/29/2014	18755	BUSINESS SOLVER	192.00	September Service Fees, July additional members, August additional members - non EBC sponsored lines of coverage.	
09/29/2014	18756	CALL ONE	6,264.60	PHONE SERVICE 8/15-9/15	
09/29/2014	18757	CARE OF TREES	2,430.00	Removed (2) dead trees, and crown clean pruning of (7) trees around playground	
09/29/2014	18758	CHICAGO TRIBUNE	79.92	SUBSCRIPTION 9/24-11/18	
09/29/2014	18759	CONCEPT WIRELESS COM	2,861.50	Multiple Invoices	
09/29/2014	18760	COONEY, FRANK CO INC	8,789.30	21st Century Classroom Furniture	
09/29/2014	18761	COOP ASSN FOR SPEC E	212,064.87	Multiple Invoices	
09/29/2014	18762	CREATIVE SMARTS INC	615.00	Greg Tang Conference for Math Specialists	
09/29/2014	18763	CREATIVE CULTURE CON	1,690.32	Half Day Presentation Fee for Patrick Schwarz, Ph.D. on September 19, 2014 for Support Staff, 1923 Lake Avenue, Highland Park, IL 60035	
09/29/2014	18764	DAILY HERALD	34.00	SUBSCRIPTION 9/6-10/4	
09/29/2014	18765	DEMCO	372.28	Multiple Invoices	
09/29/2014	18766	EAI	123.93	Smart Pal Folders for 8th Grade Algebra Teachers	
09/29/2014	18767	ELLISON EDUCATIONAL	36.00	Replacement Part/Ellison Quote YKXX662836	
09/29/2014	18768	FEDERAL EXPRESS	109.66	POSTAGE	
09/29/2014	18769	FIRM SYSTEMS	2,292.00	Invoice 0908095-IN Fingerprints 8/31/14	
09/29/2014	18770	FIRST ATT: FINANC	225.00	Lego Robotics Team Registration ***Note: Clearly indicate your FLL team number as "FLL 201413713" on all correspondence.*** Vendor Info: FIRST Attn: Finance 200 Bedford Street Manchester, NH 03101 Send Purchase Order to	

CHECK DATE	CHECK NUMBER	VENDOR	AMOUNT	INVOICE DESCRIPTION
09/29/2014	18771	FITNESS FINDERS	40.47	Finance Fax # is 603-206-2079 Shoe tokens for the Running Club.
09/29/2014	18772	FOLLETT SOFTWARE COM	73.90	Follett Barcodes
09/29/2014	18773	FOLLETT SCHOOL SOLUT	321.69	Multiple Invoices
09/29/2014	18774	GIANT STEPS	13,668.60	October Tuition for two District 41 students Invoice #041-1014E
09/29/2014	18775	GLENOAKS THERAPEUTIC	1,289.07	Multiple Invoices
09/29/2014	18776	GRAY, CHELSEA	147.04	Premium refund
09/29/2014	18777	HARLAND TECHNOLOGY S	579.00	Scantron Maint. Agreement Renewal
09/29/2014	18778	HEINEMANN	108.90	Phonics Lessons Grade K
09/29/2014	18779	HOUGHTON MIFFLING RE	1,350.00	Big Ideas Math (Hadley) 2013/2014 Order#5
09/29/2014	18780	IASA DUPAGE DIVISION	110.00	2014-2015 Dues
09/29/2014	18781	ICE MOUNTAIN SPRING	453.79	Multiple Invoices
09/29/2014	18782	INNOVATIVE MODULAR S	59,460.00	Multiple Invoices
09/29/2014	18783	INTERNATIONAL PLASTI	88.99	Zip Lock Bags for Bookroom
09/29/2014	18784	ISPA CONVENTION	279.00	Registration for Veronica Magana-Atilano ISPA Member #4115 October 2 & 3, 2014
09/29/2014	18785	IVERSON PUBLISHING	1,161.60	Multiple Invoices
09/29/2014	18786	JUNIOR LIBRARY GUILD	1,308.00	Junior Library Guild membership Order # 400317 Customer Id: J060795 Sales Rep: Katrina Elmer 800.491.0174
09/29/2014	18787	KONICA MINOLTA BUSIN	17,503.00	Multiple Invoices
09/29/2014	18788	KRAUS, LOUIS J MD	1,680.00	Evaluation Documentation Preparation for D41 Student June 2014
09/29/2014	18789	LAKESHORE LEARNING M	126.47	Classroom Supplies
09/29/2014	18790	LAZEL	8,325.10	Annual Renewal for Reading A to Z
09/29/2014	18791	LINCOLN LIBRARY PRES	376.00	Annual Renewal for LMC Research Database
09/29/2014	18792	LUKANCIC MIDDLE SCHO	250.00	ENTRY FEE FOR 2/7 - 2/7/14 WRESTLING TOURNAMENT REPLACEMENT CHECK
09/29/2014	18793	LUPE LLOYD & ASSOCIA	2,500.00	Professional Development for Dual Language
09/29/2014	18794	MASON, KIM	76.51	Classroom supplies
09/29/2014	18795	MAY DECORATING II I	2,890.00	Finish & sand drywall in library, offices, and hallway and re-paint all surfaces at Ben Franklin School due to flood
09/29/2014	18796	MCGRAW-HILL SCHOOL E	304.88	EM Consumable Workbooks 2014/2015 BF 4th Grade
09/29/2014	18797	METRO PROFESSIONAL P	2,825.84	Multiple Invoices
09/29/2014	18798	MONARCH RENOVATION I	600.00	REPAIR HD GIRLS' LOCKERS
09/29/2014	18799	OFFICE DEPOT	675.16	Multiple Invoices
09/29/2014	18800	PEPPERS, PAT	65.00	V-ball ref 9/18
09/29/2014	18801	PIONEER VALLEY BOOKS	796.95	Multiple Invoices
09/29/2014	18802	PIONEER ATHLETICS	163.00	paint for lines on activity

CHECK		CHECK	INVOICE	
DATE	NUMBER	VENDOR	AMOUNT	DESCRIPTION
09/29/2014	18803	PYONE, CHO	562.50	fields outside Translating
09/29/2014	18804	RANDALL INDUSTRIES	316.57	LIFT REPAIR
09/29/2014	18805	RBS ACTIVEWEAR	219.85	Wildcat Way shirts for Hadley Staff
09/29/2014	18806	REALLY GOOD STUFF IN	679.53	Multiple Invoices
09/29/2014	18807	ROSCOE CO	214.92	Multiple Invoices
09/29/2014	18808	SASED	29,189.25	75% of FY15 HI Tuition Prebill for D41 - Invoice #1001500090
09/29/2014	18809	SCHOLASTIC INC	107.02	Classroom Supplies
09/29/2014	18810	SCHOOL LIBRARY JOURN	79.99	Professional Journal Subscription
09/29/2014	18812	SCHOOL SPECIALTY	3,204.19	Multiple Invoices
09/29/2014	18814	SOARING EAGLE ACADEM	43,058.40	Multiple Invoices
09/29/2014	18815	SOCIAL THINKING	864.85	Forest Glen Classrooms
09/29/2014	18816	STAPLES ADVANTAGE	220.44	Multiple Invoices
09/29/2014	18817	STEINHILBER, JULIE	37.93	9/19/2014 Steinhilber classroom supplies
09/29/2014	18818	TERRACON	20,738.00	Multiple Invoices
09/29/2014	18819	THE OMNI GROUP	31.50	CPI 403(b) - Invoice 1409-7801
09/29/2014	18820	THERDAT	68.20	Classroom Supplies
09/29/2014	18821	TIME FOR KIDS	2,145.35	Multiple Invoices
09/29/2014	18822	TOLEDO PHYSICAL EDUC	258.43	Stopwatches, gator balls, and cones
09/29/2014	18823	TRANSLATION SMART	60.00	Translation
09/29/2014	18824	TTR SHIPPING	725.00	Shipping Cost to Pickup Xerox Copier at CSO
09/29/2014	18825	UNITED RADIO COMMUNI	776.00	Radios for Hadley
09/29/2014	18826	VILLAGE OF GLEN ELLY	17.00	GAR WATER 7/3-8/7
09/29/2014	18827	VONDRUSKA, CAMILLE	20.00	Returned lost library book that was paid for. Student [REDACTED]
09/29/2014	18828	WILLOWBROOK WILDLIFE	210.00	Program Fee for Guided Tour
09/30/2014	18829	AFLAC	49.46	Multiple Invoices
09/30/2014	18830	AFSCME	2,158.41	Multiple Invoices
09/30/2014	18831	SDU	1,613.92	Payroll accrual
09/30/2014	18832	TOM VAUGHN, CHAPTER	282.50	Payroll accrual
09/22/2014	201400146	RELIANCE STANDARD LI	340.96	LTD - October 2014
09/22/2014	201400147	UNUM LIFE INSURANCE	2,615.68	LTD 10/1/14 to 10/31/14
09/30/2014	201400148	ILL MUNICIPAL RETIRE	68,957.79	Multiple Invoices
09/30/2014	201400149	ILLINOIS DEPT OF REV	49,633.38	Multiple Invoices
09/30/2014	201400150	INTERNAL REV SERVICE	191,036.05	Multiple Invoices
09/30/2014	201400151	T H I S	17,738.58	Multiple Invoices
09/30/2014	201400152	TEACHERS RETIREMENT	100,352.65	Multiple Invoices
09/30/2014	201400153	WAGEWORKS	5,430.86	Multiple Invoices
09/30/2014	201400154	THE OMNI GROUP	37,080.20	Multiple Invoices

Totals for checks 946,070.22

FUND SUMMARY

<u>FUND</u>	<u>DESCRIPTION</u>	<u>BALANCE SHEET</u>	<u>REVENUE</u>	<u>EXPENSE</u>	<u>TOTAL</u>
10	Education Fund	399,810.83	0.00	360,440.56	760,251.39
20	Operations & Maintenance Fund	0.00	0.00	25,832.68	25,832.68
40	Transportation Fund	0.00	0.00	2,130.00	2,130.00
50	Social Security/Medicare Fund	28,960.04	0.00	0.00	28,960.04
51	Ill Municipal Retirement Fund	48,698.11	0.00	0.00	48,698.11
60	Capital Projects Fund	0.00	0.00	80,198.00	80,198.00
***	Fund Summary Totals ***	477,468.98	0.00	468,601.24	946,070.22

***** End of report *****

CHECK		CHECK		INVOICE	
DATE	NUMBER	VENDOR	AMOUNT	DESCRIPTION	
10/02/2014	18833	ANDERSON, LINDA	618.31	Multiple Invoices	
10/02/2014	18834	AQUASCAPE	26.98	WATER TREATMENT	
10/02/2014	18835	B & F TECHNICAL CODE	1,212.96	Multiple Invoices	
10/02/2014	18836	DICK BLICK	548.28	Multiple Invoices	
10/02/2014	18837	DUPAGE ROE	525.00	Multiple Invoices	
10/02/2014	18838	FRANCZEK RADELET & R	1,698.85	GLENBARD PTAB COOP AUGUST 2014	
10/02/2014	18839	HEALTH MANAGEMENT SY	55.44	Employee Assistance Program/Adjust to Reflect Employee count	
10/02/2014	18840	ID WHOLESALER	71.42	Prox Card Sleeves	
10/02/2014	18841	KRANZ	202.64	TOWELS	
10/02/2014	18842	MACGILL & CO, WM V	94.45	Gloves for Special Ed Students	
10/02/2014	18843	METRO PROFESSIONAL P	5,164.32	Multiple Invoices	
10/02/2014	18844	MPZ MASONRY INC	917.69	Flood clean up in Ben Franklin s Gym	
10/02/2014	18845	NICKY'S FOLDERS/ROCH	115.00	Folders-take home	
10/02/2014	18846	NORTHERN ILLINOIS GA	99.35	Multiple Invoices	
10/02/2014	18847	OAKELY-KAWA, ANGEL	225.00	Reimburse Angel Oakley-Kawa for Lego Team registration	
10/02/2014	18848	OLIVE GROVE LANDSCAP	16,066.00	Multiple Invoices	
10/02/2014	18849	ORKIN LLC	955.00	Multiple Invoices	
10/02/2014	18850	PARENTS AS TEACHERS	300.00	Multiple Invoices	
10/02/2014	18851	PEPPERS, PAT	65.00	V-ball ref 9/25	
10/02/2014	18852	PROFESSIONAL PAVING	1,285.00	Multiple Invoices	
10/02/2014	18853	PYONE, CHO	612.50	Translating for Families	
10/02/2014	18854	REALLY GOOD STUFF IN	79.84	Classroom Supplies	
10/02/2014	18855	SAM'S CLUB	550.00	MEMBERSHIP RENEWAL	
10/02/2014	18856	SCHOOL SPECIALTY	142.18	Multiple Invoices	
10/02/2014	18857	SUPER DUPER SCHOOL C	75.85	Supplies for Camille Ponce at Churchill School - Speech/Language Path	
10/02/2014	18858	TIGERDIRECT.COM	1,182.15	Multiple Invoices	
10/02/2014	18859	TRAN, LAN PHUONG	25.00	Translating in Vietnamese	
10/02/2014	18860	US GAMES INC	935.97	Flood Replacement Items-PE	
10/02/2014	18861	WAGeworks	335.94	FSA administration - Invoice #20140162825	
10/02/2014	18862	WAREHOUSE DIRECT	1,647.00	Multiple Invoices	
10/02/2014	18863	WASTE MANAGEMENT WES	3,110.76	Multiple Invoices	
10/02/2014	18864	WITTNER, CHERYL	65.00	V-ball ref 9/30	
10/02/2014	201400155	ILLINOIS DEPT OF REV	2,539.45	3rd Quarter 2014 Illinois Withholding Income Tax 941 Payment	
10/02/2014	201400156	MB FINANCIAL BANK	150,040.98	Loan payment	
10/02/2014	201400157	T H I S	7,206.34	THIS fund Reference #14999	

Totals for checks 198,795.65

FUND SUMMARY

<u>FUND</u>	<u>DESCRIPTION</u>	<u>BALANCE SHEET</u>	<u>REVENUE</u>	<u>EXPENSE</u>	<u>TOTAL</u>
10	Education Fund	2,875.39	0.00	15,041.58	17,916.97
20	Operations & Maintenance Fund	0.00	0.00	23,408.74	23,408.74
30	Debt Service Fund	0.00	0.00	150,040.98	150,040.98
60	Capital Projects Fund	0.00	0.00	7,428.96	7,428.96
***	Fund Summary Totals ***	2,875.39	0.00	195,920.26	198,795.65

***** End of report *****

Note: Shaded/bold section numbers represent instruction held in portables

Abraham Lincoln

											AEC	Total 9/30/14	09/30/13	Change (+/-)
Level 1/Kdg	22	18	22	19								81	90	-9
Level 1/G1	23	22	23	23								91	91	0
Level 2/G2	21	22	19	20								82	99	-17
Level 2/G3	24	23	25	24								96	111	-15
Level 3 /G4/Sci	24	28	21	18										
Level 3/G4/Math	24	22	25	25							5	101	90	11
Level 3 /G5/Sci	24	19	26	27										
Level 3/G5/Math	21	18	19	19							5	82	103	-21
Level 3 Lit	23	25	23	23	24	23	22	24						
Total Students at Abraham Lincoln												533	584	-51

Benjamin Franklin

											SC SpEd*	AEC	Total 9/30/14	09/30/13	
Level 1/Kdg	22	19	21	18							2		82	72	10
Level 1/G1	19	19	17	17							2		74	96	-22
Level 2/G2	26	24	26	25							1		102	95	7
Level 2/G3	24	25	24	24							5		102	85	17
Level 3 /G4/Sci	26	26	29	27											
Level 3/G4/Math	26	24	23								8	7	88	113	-25
Level 3 /G5/Sci	29	27	28												
Level 3/G5/Math	19	27	21	27							4	18	116	115	1
Level 3 Lit	25	27	27	27	29	26	28								
Total Students at Benjamin Franklin													564	576	-12

* Unduplicated count

Churchill

											AEC	Total 9/30/14	09/30/13	
Pre K (Bilingual)	19	13										32	38	-6
Level 1/Kdg	25	21	23	24	22							115	108	7
Level 1/G1	17	20	23	23	23							106	107	-1
Level 2/G2	19	22	22	21	21							105	110	-5
Level 2/G3	17	25	24	24	23							113	81	32
Level 3 /G4/Sci	20	22	21	22										
Level 3/G4/Math	20	17	21	19							6	83	111	-28
Level 3 /G5/Sci	24	22	26	20	20									
Level 3/G5/Math	20	22	19	20	17						16	114	105	9
Level 3 Lit	21	23	20	21	20	24	23	22	22					0
Total Students at Churchill												668	660	8

Bilingual and Dual Lang sections in italics

Forest Glen

											AEC	Total 9/30/14	09/30/13	
EC Self Contained	12											12	15	-3
EC Structured	14											14	5	9
EC Blended	18	15	14	17								64	74	-10
Level 1/Kdg	18	19	20	18								75	62	13
Level 1/G1	24	24	22									70	81	-11
Level 2/G2	20	23	21	20								84	68	16
Level 2/G3	24	24	24									72	84	-12
Level 3 /G4/Sci	27	25	26											
Level 3/G4/Math	24	25	21								8	78	92	-14
Level 3 /G5/Sci	22	24	22	22										
Level 3/G5/Math	15	24	22	16							13	90	87	3
Level 3 Lit	25	22	25	24	24	23	24							0
Total Students at Forest Glen												559	568	-9

9/30/14

Hadley Jr. High

		SC SpEd	Total	09/30/13	
Gr 6	394	12	407	378	29
Gr 7	357	11	370	412	-42
Gr 8	396	7	403	405	-2
Total Students at Hadley Jr High			1180	1195	-15

Portables are used for 7/8 Math & Social Studies

District Totals	Current	9/30	Change (+/-)
PreK/EC	122	132	-10
Level 1/Kdg	353	332	21
Level 1/G1	341	375	-34
Level 2/G2	373	372	1
Level 2/G3	383	361	22
Level 3 /G4	350	406	-56
Level 3/ G5	402	410	-8
Gr 6	407	378	29
Gr 7	370	412	-42
Gr 8	403	405	-2
Grand Total	3504	3583	-79

District 41 Class Size Targets

Level 1 (GR K/1)

20-22 students per class

Level 2 (GR 2/3)

22-25 students per class

Level 3 (GR 4/5)

25-27 students per class

*23-25 students per class; in schools that have not made AYP for two consecutive years

Grades 6 - 8

26-28 students per class

*Approved by the Board of Education:
March 10, 2014*